

Dementia-friendly communities

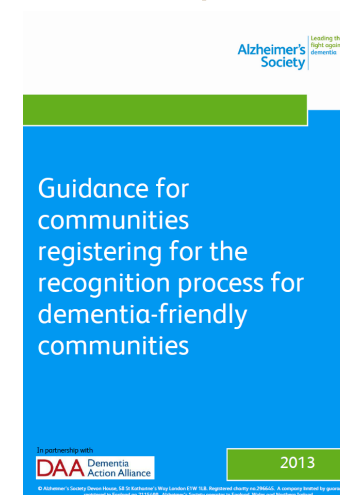
Terry YS Lum

24 April 2015



What is a dementia-friendly community?

- “A city, town or village where people with dementia are understood, respected and supported, and confident **they can contribute to community life**. In a dementia-friendly community **people will be aware of and understand dementia**, and people with dementia will **feel included and involved**, and have **choice and control** over their day-to-day lives”
- Alzheimer’s Society 2013



What is a dementia-friendly community?

- An informed, safe, and respectful community for people with dementia.



Dementia-Friendly Community

Go to www.actonalz.org/communities-action-resources to find valuable resources for every part of your community.



Becoming an informed, safe, and respectful community for people with dementia involves:

- Raising awareness about Alzheimer's and transforming attitudes
- Having supportive options that foster quality of life
- Supporting caregivers and families touched by the disease
- Including diverse communities
- Promoting meaningful participation in community life

ACT on Alzheimer's

- ACT on Alzheimer's is a statewide, volunteer-driven collaboration preparing Minnesota for the personal, social, and budgetary impacts of Alzheimer's disease.

What is a dementia-friendly community

In this community:

1. people will be aware of and understand more about dementia;
2. people with dementia and their carers will be encouraged to seek help and support;
3. and people with dementia will feel included in their community, be more independent and have more choice and control over their lives

What is a dementia-friendly community?

UK		US
Shaping communities around the views of people with dementia and their carers	Attitude & Stigma	
Challenging stigma and building awareness	Attitude & Stigma	
Ensuring early diagnosis, personalized and integrated care is the norm	Health & Medical care	Early diagnosis and quality care; patient and caregiver support
Maintaining independency by delivery community-based solutions	Health & Medical care	Specialized memory loss support and services
Appropriate transport	Independent living	Independent living
Easy to navigate physical environments	Dementia inclusive environment	Accessible, user-friendly transportation and environments
Businesses and services that respond to customers with dementia	Dementia inclusive environment	Dementia-aware and responsive client services
Ensuring that activities include people with dementia	Dementia inclusive environment	Dementia-friendly business; customer and employee support
Empowering people with dementia and recognising their contribution	Engagement	Meaningful engagement
Befrienders helping people with dementia engaging in community life	Engagement	Welcoming supportive spiritual environments
	Engagement	Emergency preparedness and response

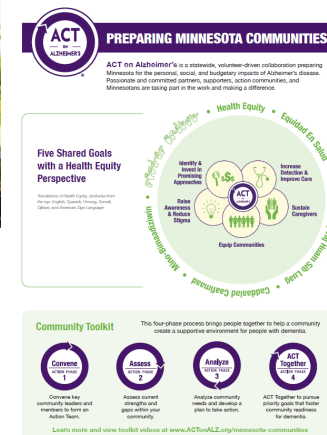
So, ways to move forwards.....



A GUIDE TO BECOMING A DEMENTIA-FRIENDLY COMMUNITY

REPORT, SEPTEMBER 2014

TALKING ABOUT ALZHEIMER'S ACROSS AUSTRALIA



So, ways to move forwards.....

- A community-based participatory approach to make Hong Kong Dementia-friendly, focusing on:
 - Shaping attitude & remove stigma
 - Early diagnosis
 - Personalized and integrated care
 - Support independent living
 - Dementia inclusive environment
 - Meaningful engagement

A life that worth living.....

- Meaningful engagement
- Self control, choice & independency
- Preserve personhood

A community based participatory approach..

- Involvement of people with dementia and their carers....Nothing about us without us....
- Community – researchers co-ownership & co-learning
- Empowerment & solution focused
- Community-based solutions



Thank You

SAU PO CENTRE ON AGEING, HKU
2/F, The Hong Kong Jockey Club Building for Interdisciplinary Research
5 Sassoon Road, Pokfulam

Tel: (852) 2831-5120
Fax: (852) 2540 1244
Email: ageing@hku.hk
Homepage: <http://ageing.hku.hk>